

## The power of Community Edits and SonarCharts



almost 7,000 community edits in Sweden  
of which 1,500 of rocks, wrecks and obstructions alone

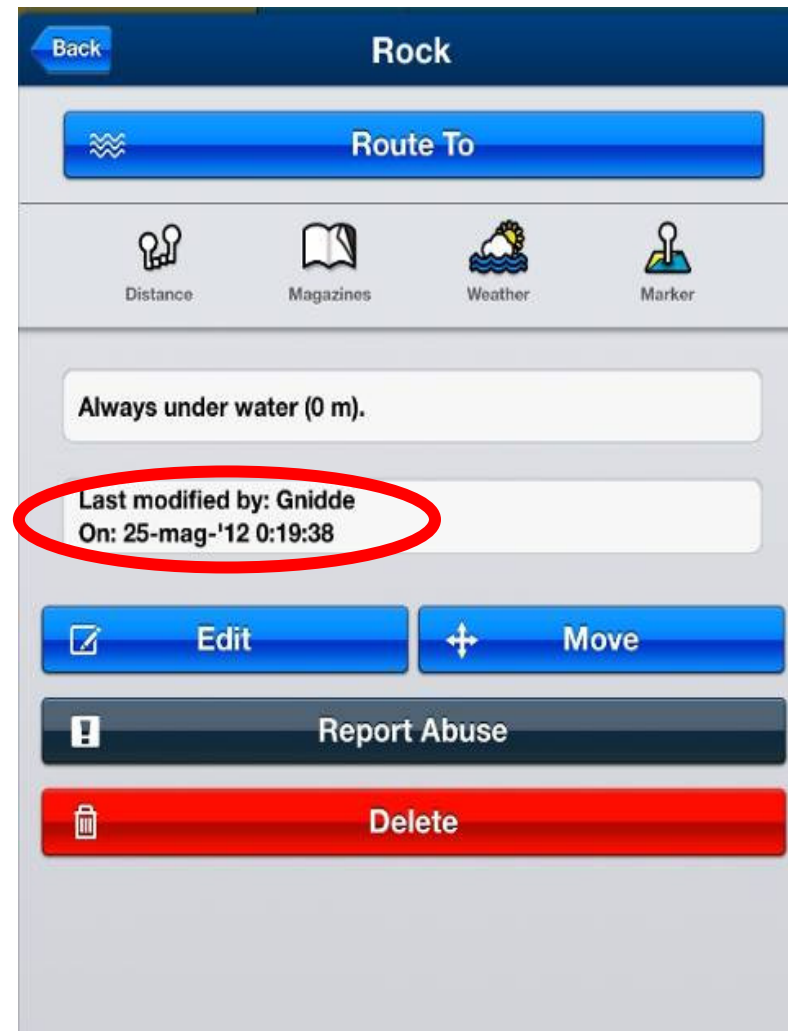


# Example 1



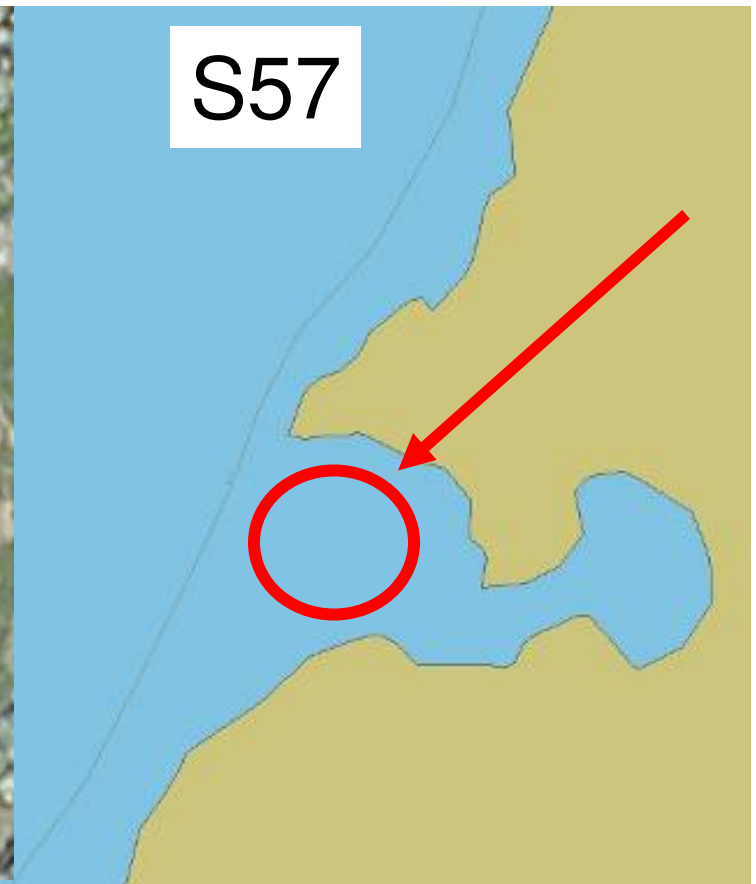
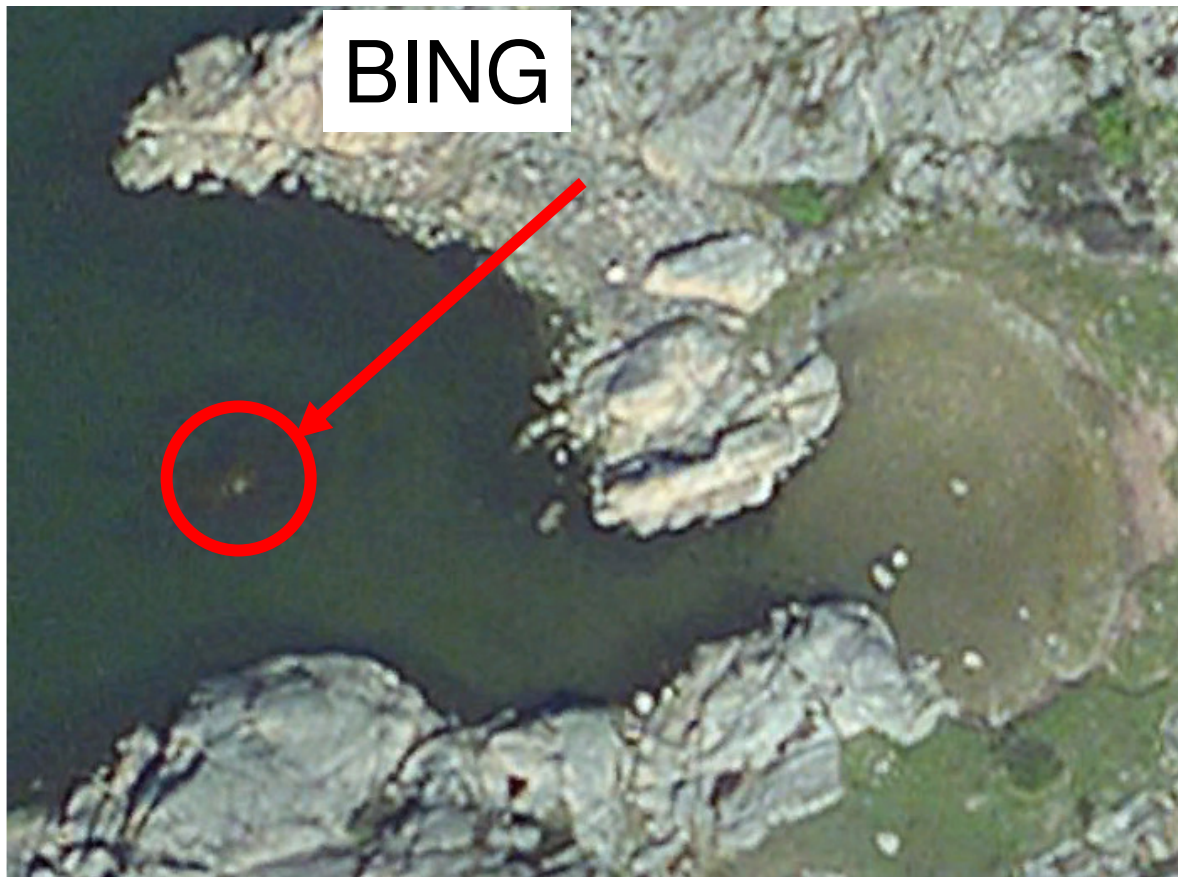
## Goteborg - 57°47.864' N 011°42.552' E

Screenshots of Navionics Mobile App: rock added by Gnidde in May 2012





Goteborg 57°47.864' N 011°42.552' E **seen in BING and S57**  
**The rock missing in S57 is clearly visible in BING**



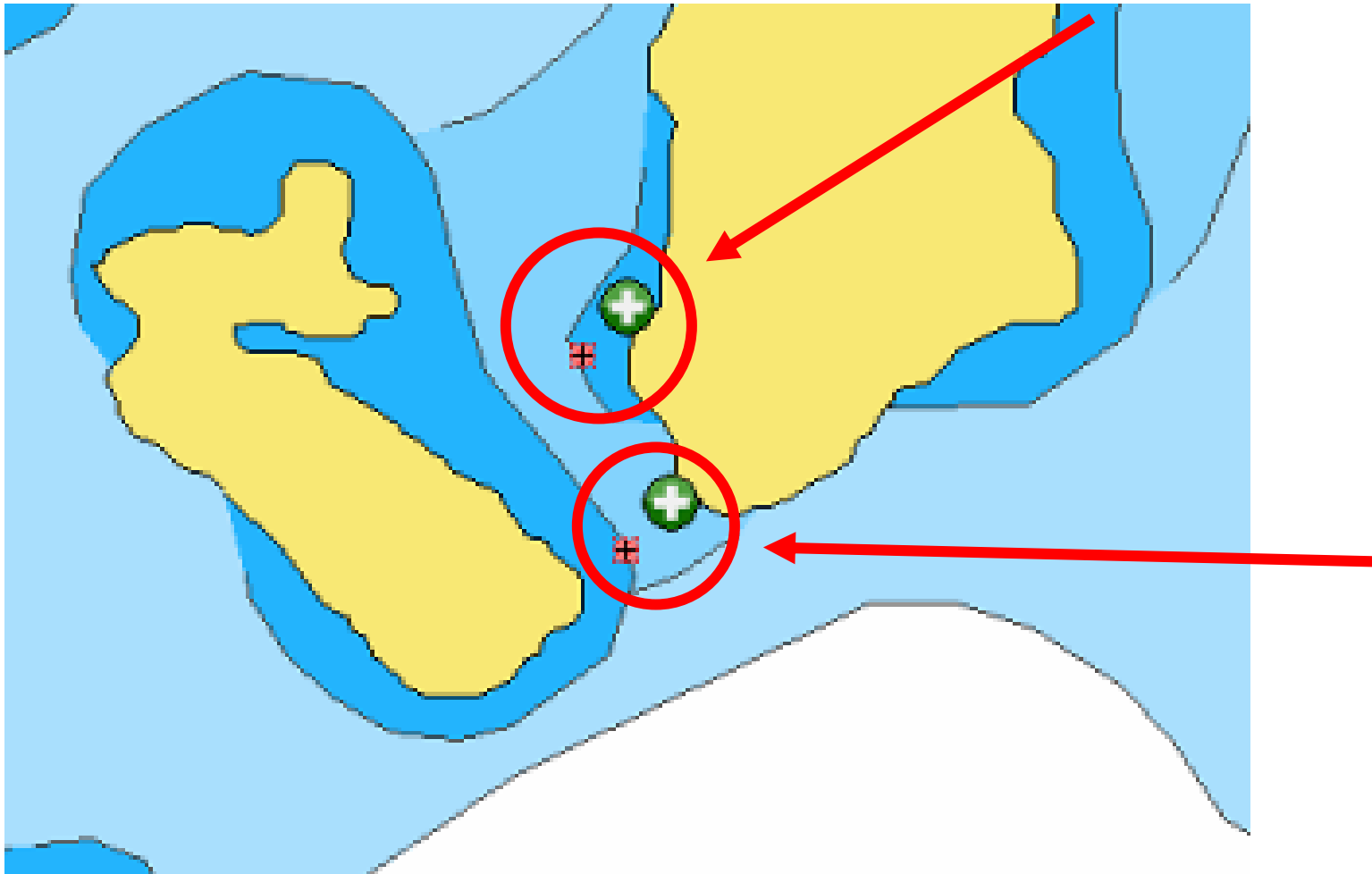


# Example 2



# Snugge - 57°57.173' N 011°31.751' E

Rocks reported by boaters, one with signs of collision





Snugge - 57°57.173' N 011°31.751' E

**Two rocks reported by boaters, one with clear signs of a collision**

Back Djävulshålet S

Route To

Distance Magazines Weather Marker

Always under water (1.5 m).

Last modified by: Lydhig  
On: 06-set-'12 18:46:39

Edit Move

Report Abuse

Delete

Back Djävulshålet N

Route To

Distance Magazines Weather Marker

Always under water (1.8 m)

Information: I dived at the spot. It is a flat stone at the shape of a pork shop lying on the bottom at 1.8-2.0 m. Visible marks of something that hit the stone on the southern side.

Last modified by: delice  
On: 23-nov-'13 23:40:46

Edit Move

Report Abuse

Delete





Snugge - 57°57.173' N 011°31.751' E

**S57 does not report the rocks, one of which has been hit by a boat**





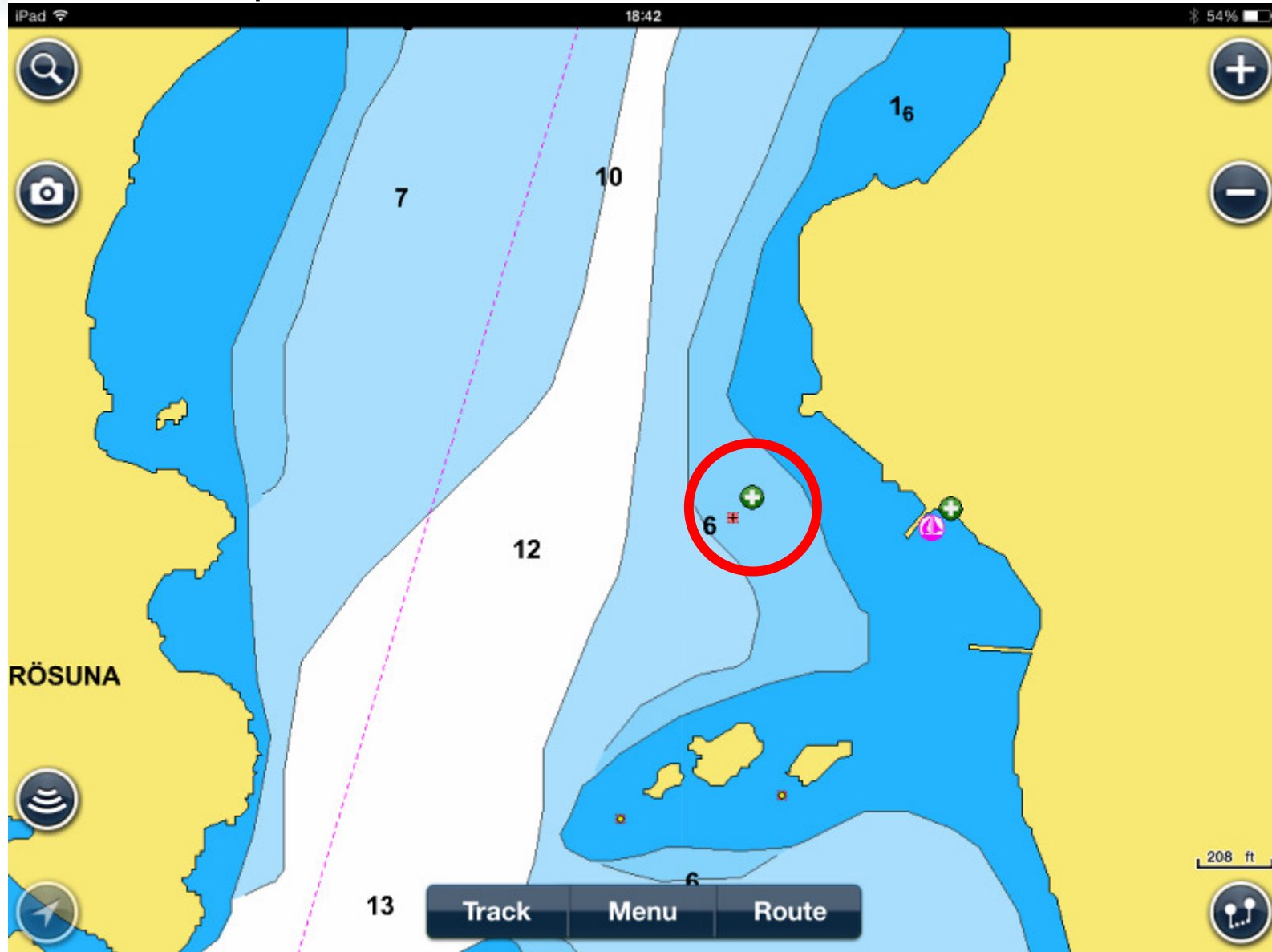


# Example 3



Goteborg - 58°39.679' N 011°15.597' E

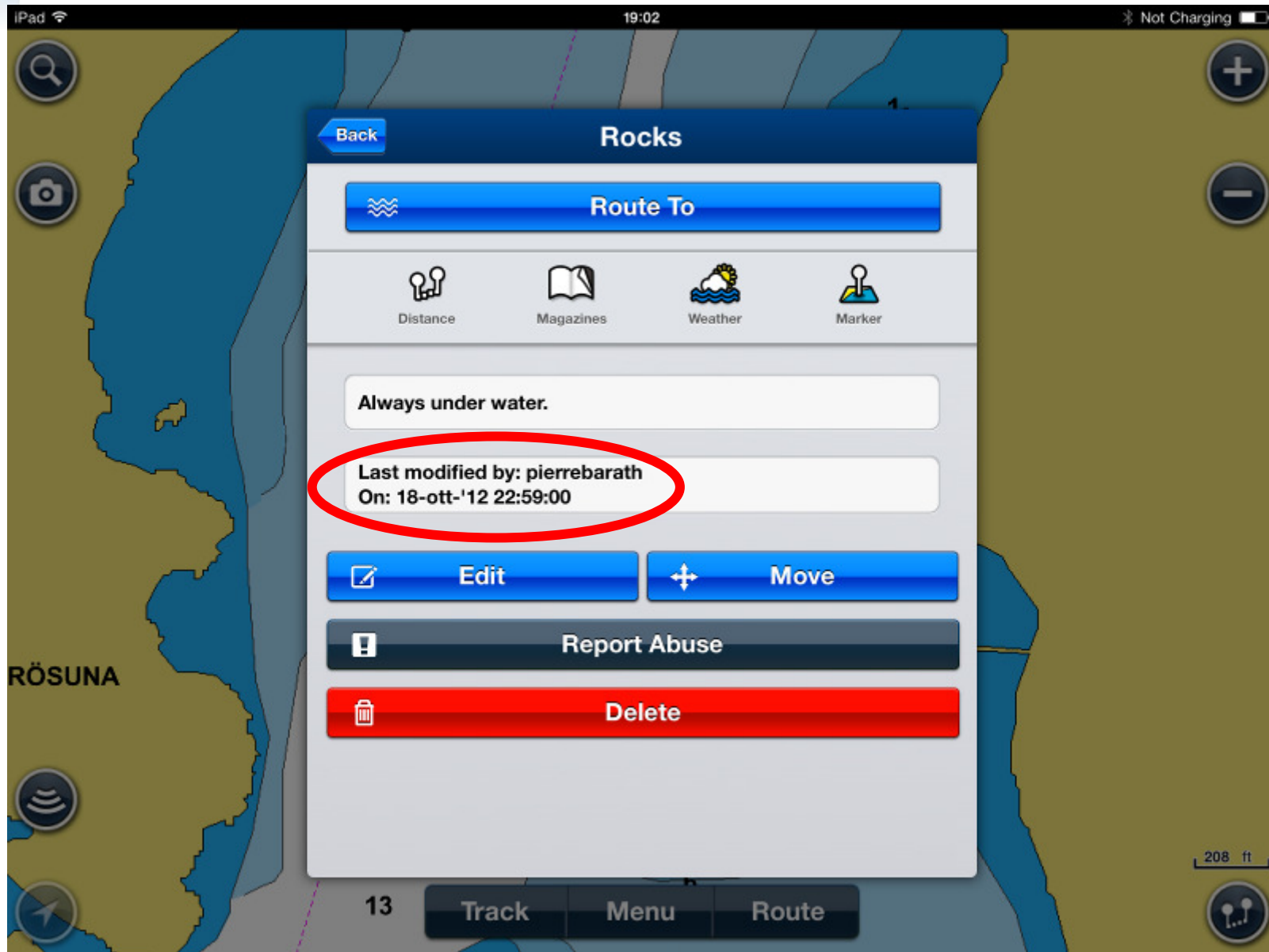
Navionics Mobile App: rock added by Pierrebarath in Oct '12 in a 3 to 6 meter depth area





Goteborg - 58°39.679' N 011°15.597' E

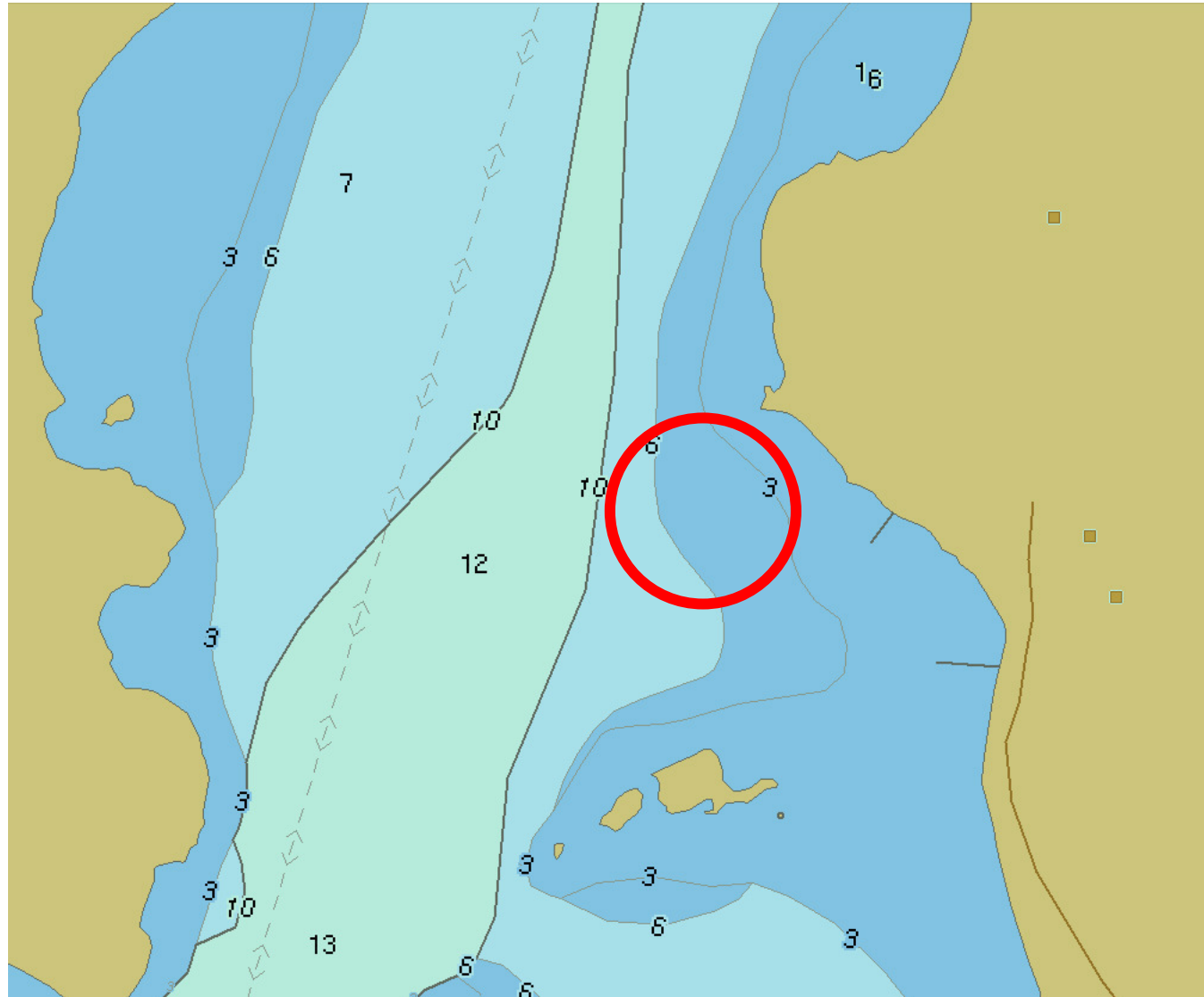
Details of who and when the rock was added





Goteborg - 58°39.679' N 011°15.597' E

S-57 does not report the rock





Goteborg -  $58^{\circ}39.679' \text{ N}$   $011^{\circ}15.597' \text{ E}$   
verified by Navionics: underwater rock missing  
in S57

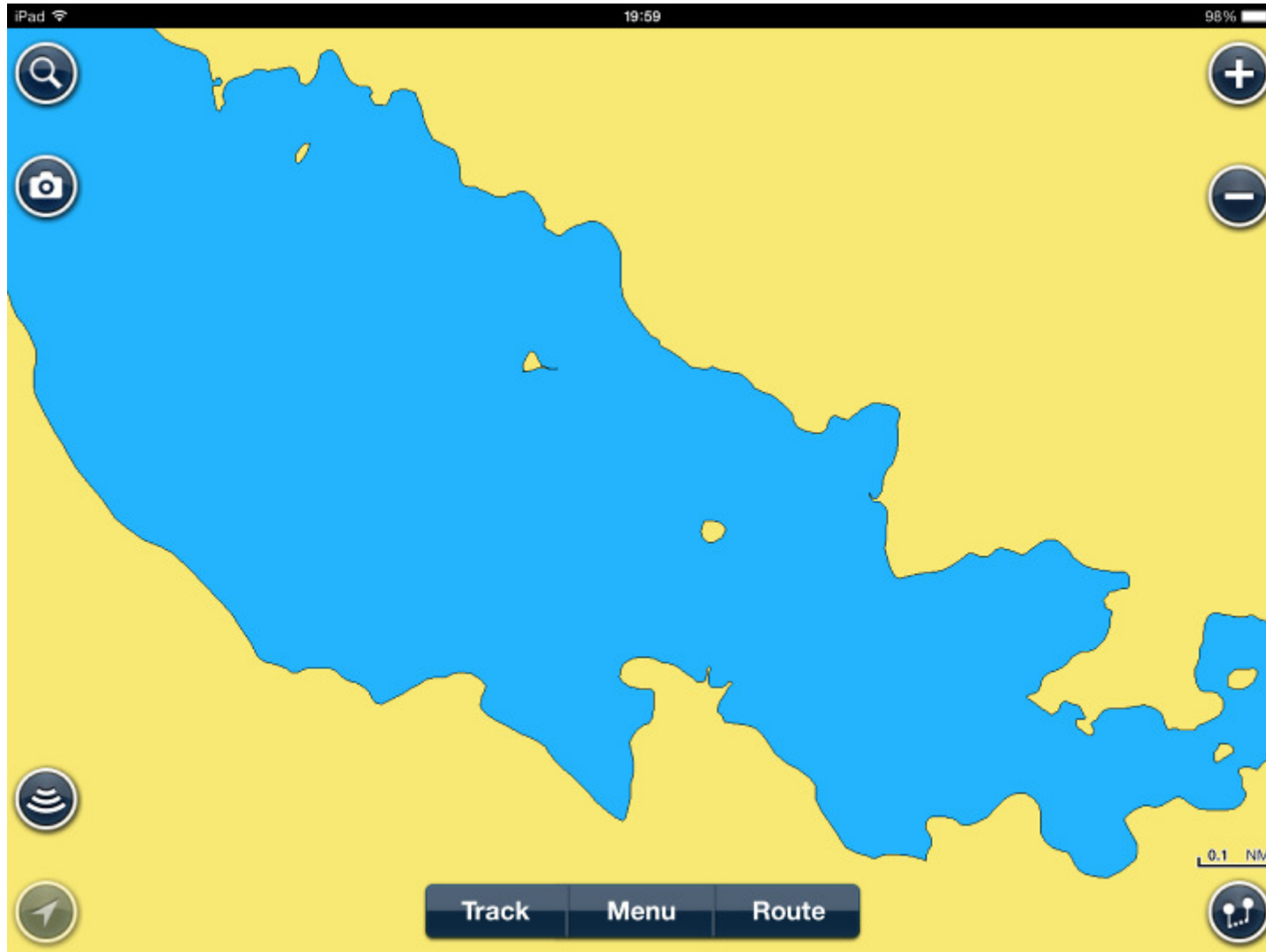




# Example 4



## Rusktrasket Lake, conventional chart







# Rusktrasket Lake: SonarChart

